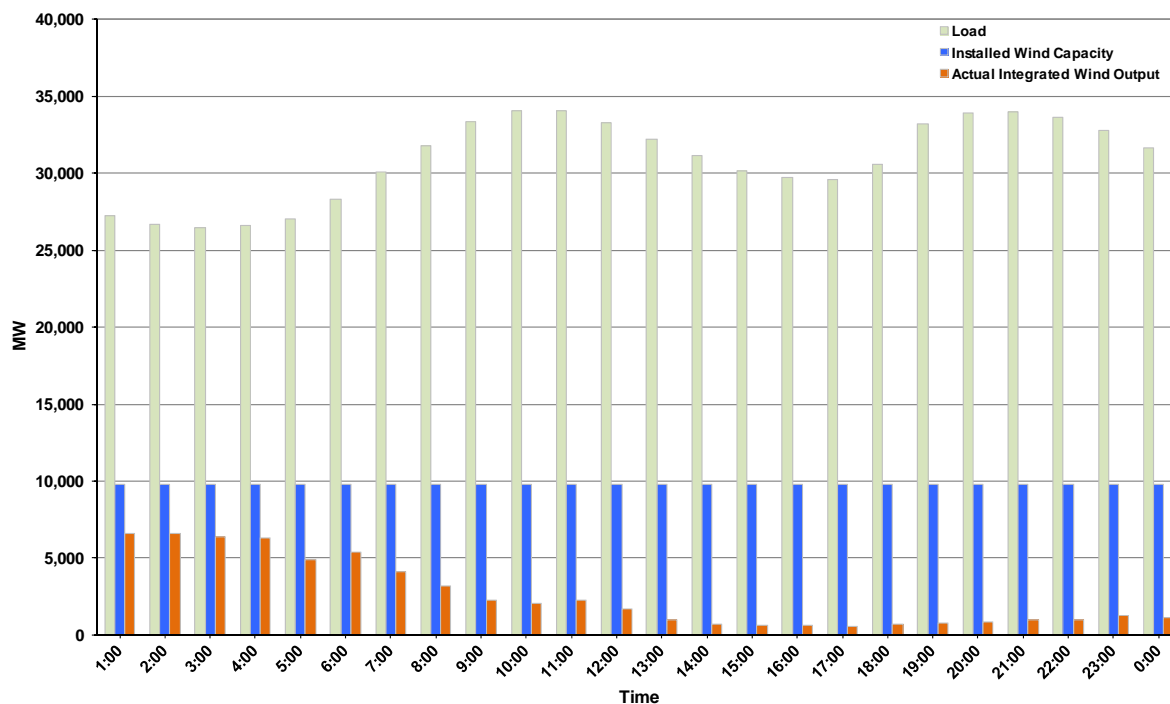




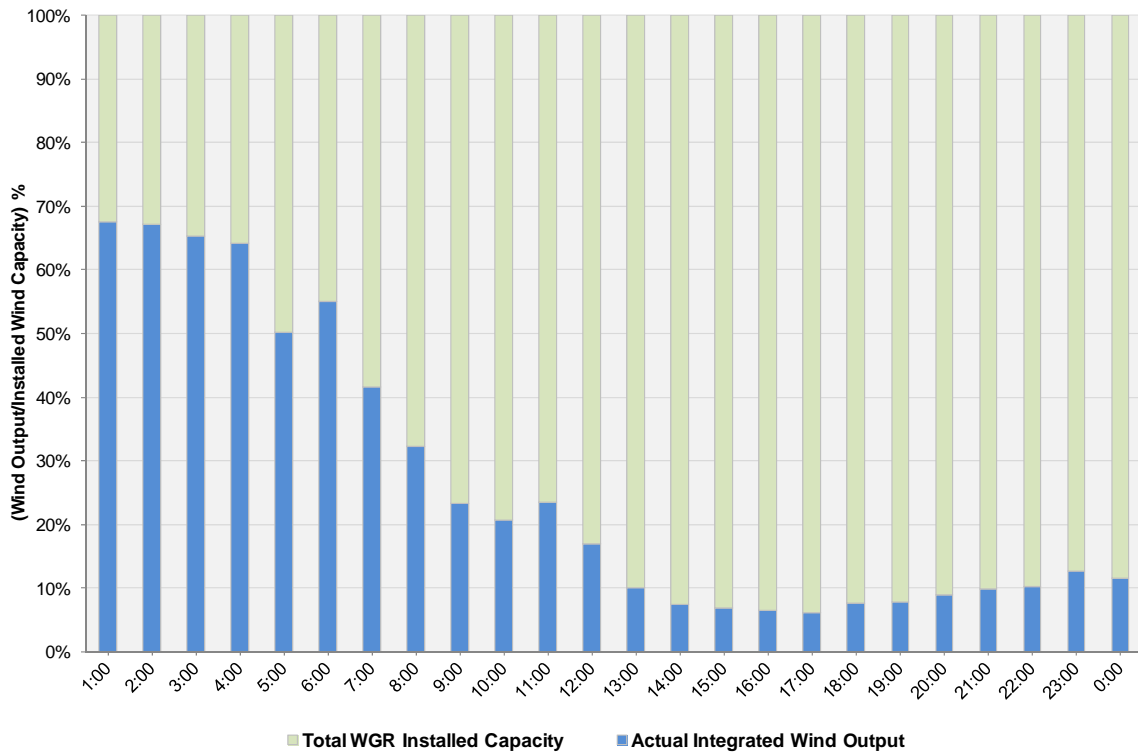
ERCOT Grid Operations Wind Integration Report: 01/28/12

Peak Load	34,074 MW
Load Peak Hour (HE)	10
Wind over Peak	2,032 MW
Wind Record 10/07/11	7,400 MW
Max Wind Value	6,684 MW
Wind Peak Time	00:25
Wind Integration %	24.52%

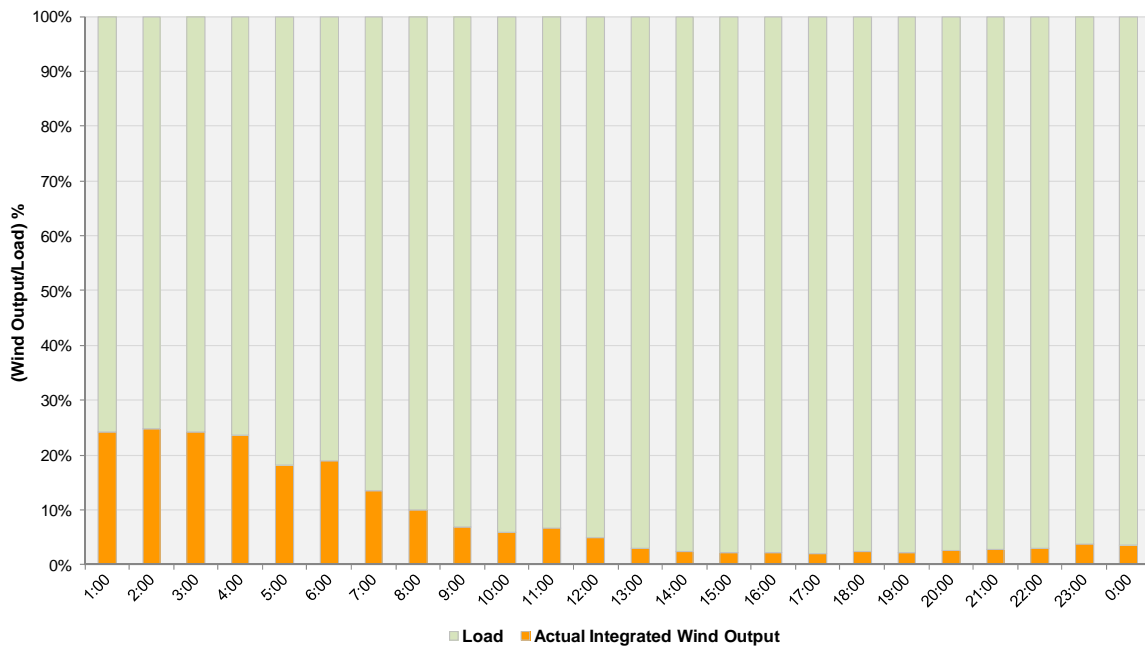
**Hourly Average Actual Load vs. Actual Wind Output
01-28-2012**



Actual Wind Output as a Percentage of the Total Installed Wind Capacity
01-28-2012



Actual Wind Output as a Percentage of the ERCOT Load
01-28-2012



ERCOT Load vs. Actual Wind Output 1/21/2012 - 1/28/2012

